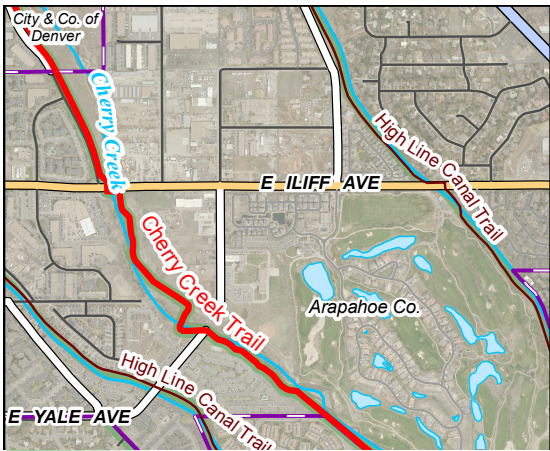


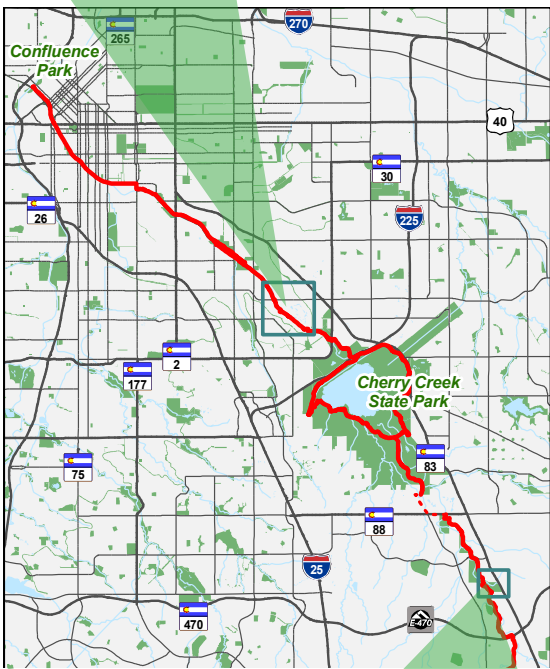
Cherry Creek Regional Trail



Length: The Cherry Creek Trail, which runs 40 miles from Douglas County to Confluence Park in Downtown Denver, is one of the metro area's most treasured trail corridors.

One of the trail's highlights is Cherry Creek State Park. This 4,200 acre park offers boating for the water enthusiast and miles of trail for spectacular wildlife viewing whether you're a bird watcher, hiker or cyclist.

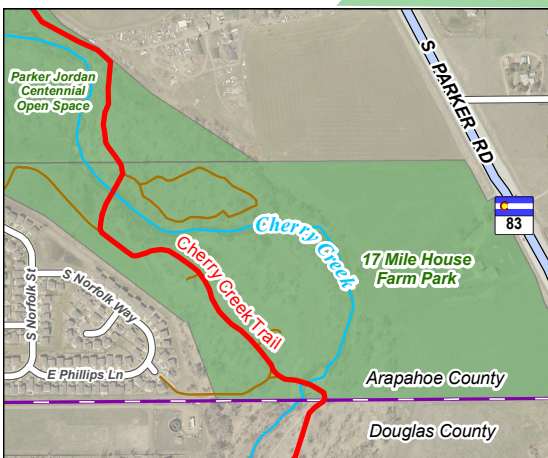
About 12 miles of the trail runs through Arapahoe County.



Features: Cyclists, walkers and runners enjoy varied scenery as they travel beside Cherry Creek. From the urban setting of Downtown Denver to the rolling hills of rural Parker, the Cherry Creek Trail offers visitors a taste of the wide range of habitat that calls Denver and its surrounding areas home.

History: The Cherry Creek Trail began hundreds of years ago, when the Native Americans and settlers traveled on the Cherokee Trail, which ran along the eastern side of the creek.

In the late 1800s, these weary travelers could rest at Mile Houses along the way to receive a warm meal, good night's sleep and a place to rest their horses. Today, visitors can catch a glimpse of history with visits to the historic 4 Mile House and 17 Mile House.

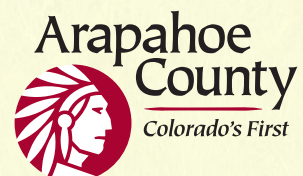


Cherry Creek Regional Trail, Con'td

Future Plans: While the Cherry Creek Trail is a favorite for thousands of residents, there are still sections missing where trail users must interact with on-street traffic to continue along the trail. In 2009, the 20 members of the Cherry Creek Basin Working Group, led by Arapahoe County, pledged to work together to beautify and enhance the regional trail corridor by adding open space buffers and closing gaps in the trail.

Twenty-six projects have been identified for future work along the corridor. One of the most recent successes was the 2009/2010 acquisition of 107 acres by Parker Jordan Metropolitan District and the City of Centennial, which served to fill a major missing link in the trail.

Maintenance: Sections of the 40 mile trail are owned and maintained by various jurisdictions, including but not limited to Denver Parks and Recreation, the Cities of Glendale, Aurora, Centennial, the Parker Jordan Metropolitan District, Colorado State Parks and more. The 3.8 miles mentioned on page 1 are maintained by Arapahoe County Open Space.



Arapahoe County Open Space
10730 E. Briarwood Ave., Ste. 100
Centennial, CO 80112

720-874-6500 | openspace@co.arapahoe.co.us

www.co.arapahoe.co.us

